



LUXURY
LODGES
OF AUSTRALIA





Luxury Lodges of Australia

A collection of independent luxury lodges and camps offering unforgettable experiences in Australia's most inspiring and extraordinary locations.

Australia's luxury lodge destinations are exclusive by virtue of their access to unique locations, people and experiences, and the small number of guests they accommodate at any one time. Australia's sun, sand, diverse landscapes and wide open spaces are luxuries of an increasingly rare kind. The experiences offered by the lodges represent a new style of distinctively Australian, elegance and experiential luxury.

2	Introduction	24	Pretty Beach House
4	Arkaba	26	qualia
6	Bamurru Plains	28	Saffire
8	Capella Lodge	30	Sal Salis
10	Cape Lodge	32	Silky Oaks Lodge
12	El Questro Homestead	34	Southern Ocean Lodge
14	Emirates One&Only Wolgan Valley	36	Spicers Peak Lodge
16	Lake House	38	The Louise
18	Lizard Island	40	True North
20	Longitude 131°	42	Some of Australia's best...
22	Mt Mulligan Lodge	44	Plan your journey
		45	Lodge locations

luxurylodgesofaustralia.com.au

[f LuxuryLodgesOfAustralia](https://www.facebook.com/LuxuryLodgesOfAustralia)

[@luxurylodgesofaustralia](https://www.instagram.com/luxurylodgesofaustralia)

[p luxelodgesofoz](https://www.pinterest.com/luxelodgesofoz)

[t luxelodgesofoz](https://www.twitter.com/luxelodgesofoz)

[#luxurylodgesofaustralia](https://www.instagram.com/luxurylodgesofaustralia)



ARKABA
Ikara-Flinders Ranges, South Australia



BAMURRU PLAINS
Top End, Northern Territory



CAPELLA LODGE
Lord Howe Island, New South Wales



CAPE LODGE
Margaret River, Western Australia



EL QUESTRO HOMESTEAD
The Kimberley, Western Australia



EMIRATES ONE&ONLY WOLGAN VALLEY
Blue Mountains, New South Wales



LAKE HOUSE
Daylesford, Victoria



LIZARD ISLAND
Great Barrier Reef, Queensland



LONGITUDE 131°
Ayers Rock (Uluru), Northern Territory



MT MULLIGAN LODGE
Northern Outback, Queensland



PRETTY BEACH HOUSE
Sydney Surrounds, New South Wales



QUALIA
Great Barrier Reef, Queensland



SAFFIRE
Freycinet, Tasmania



SAL SALIS
Ningaloo Reef, Western Australia



SILKY OAKS LODGE
The Daintree, Queensland



SOUTHERN OCEAN LODGE
Kangaroo Island, South Australia



SPICERS PEAK LODGE
Queensland's High Country, Queensland



THE LOUISE
Barossa Valley, South Australia



TRUE NORTH
The Kimberley, Western Australia



For anyone who thinks they know Australia, but haven't visited recently, or at all, take note. The Australian travel landscape has come of age. This vast continent has seen the creation of a new breed of exceptional lodges and camps in some of its most beautiful and uniquely Australian regions.

Australia now boasts a critical mass of experience-based luxury properties to appeal to upscale global travellers and adventure seekers. Formed in 2010, Luxury Lodges of Australia is a membership association offering a collective voice for these lodges and camps. It is a central point of reference for anyone searching for high-end Australian travel experiences.

The lodges in this collection are independently owned and operated. But this is no ordinary hotel 'group'. This is a collection of like-minded entrepreneurs, each passionate enough about a unique region of Australia to invest deeply in creating the kind of upscale but intimate lodging and bespoke experiences they know sophisticated global travellers seek.

Each lodge has signature experiences and activities to showcase the special aspects of its region – pristine natural landscapes, wildlife, indigenous heritage, nature, food and wine and more. It is these experiences that

define the new Australian luxury and showcase Australia's extraordinary diversity. There is particular focus on signature experiences that delve into the rich and diverse food and wine culture of Australia. Collectively, they represent a new style of distinctively Australian casual elegance and luxury.

The lodges are all about delivering a sense of place and connecting guests to their region. It is not about how much the same the lodges are, but how different, and how they reflect the diversity and authenticity of the Australian experience – whether it be coastal, desert, reef, island or wilderness lodges, luxe outback camps, vineyard retreats or culinary destinations.

The lodges are so much more than just a place to stay. These are destinations with great appeal for the often time-poor, experience-seeking travellers for whom time-out and a genuine, memorable, often life-changing experience, is the real luxury.

*There's nothing like Australia
for its sheer diversity of
natural luxury experiences...*



Arkaba

An ancient landscape moulded by millions of years of geological activity, the Ikara-Flinders Ranges offers some of Australia’s most striking outback scenery. Arkaba’s former sheep station turned thriving wildlife conservancy is home to a wondrous variety of bird and wildlife. The real luxury at Arkaba comes in the privilege of sharing this spectacular 60,000 acre private conservancy with just ten guests.

Arkaba’s homestead pays homage to a rich pastoral heritage in a style that is rustically chic and utterly exclusive. The homestead’s five rooms provide an oasis of comfort and style amidst a harsh and rugged landscape, where guests enjoy a taste of classic Australian country hospitality on a fully hosted, expertly guided Wild Bush Luxury experience in the outback.

Bush walks take you on a visible journey through time among creek beds riveted with seemingly immortal River Red Gums. Safari drives reveal craggy sandstone bluffs and the beauty of prehistoric mountain ranges. Track native wildlife with one of Arkaba’s conservationists or take a walk with one of the first inhabitants, the Adnamatna people, who have a connection with the land that emanates long before any European explorers or settlers appeared. Take a scenic flight over the ancient ramparts of Wilpena Pound and the salt pans of Lake Torrens or embrace your inner explorer and Heli-Hike along the spine of Arkaba’s rainbow-hued Elder Range. Swag out under star studded skies on an overnight Heli-Swag experience or enjoy a sundowner drink atop your own mountain as the sun sinks behind one of the world’s most incredible land formations: Wilpena Pound.



- ✈ Nearest domestic airport: Port Augusta
- 🕒 Time to lodge: 75 minute drive
- ✈ Nearest international airport: Adelaide
- 🕒 Time to lodge: 5 hour drive or 1 hour private charter flight from Adelaide or 1.5 hours from Kangaroo Island direct
- 🔍 Number of rooms/suites: 5
- 👤 Welcomes guests with children 8 years and over

Arkaba
Ikara-Flinders Ranges, South Australia
Contact: +61 (0)2 9571 6399
or arkaba@wildbushluxury.com
www.luxurylodgesofaustralia.com.au/arkaba

- 📘 WildBushLuxuryExperiences
- 📷 wildbushluxury
- 🐦 WildBushLuxury



“The isolation and the presence of an expert guide ensures swift immersion in the fascinating ecology and human history of the ranges”
Helen Anderson,
Australian Gourmet Traveller



Bamurru Plains

Bamurru Plains on the Mary River floodplains is Australia's answer to the Okavango Delta. These coastal floodplains are home to prolific bird and wildlife, with almost a third of Australia's species present, whilst nearby Kakadu and Arnhem Land are the heartland of Australia's indigenous culture. This is the setting for a mesmerising Wild Bush Luxury experience.

Bamurru Plains offers one of Australia's richest wildlife experiences: tens of thousands of magpie geese mingle with kites, egrets, herons and buffalo on the floodplain. Kookaburras, parrots, cockatoos and Agile Wallabies inhabit the fringing woodlands. Bamurru's expert guides offer exhilarating airboat trips on the floodplains, safaris by open-top 4WD vehicles, fishing trips, quad bike safaris, guided wilderness walks, crocodile-spotting river cruises and excursions to ancient rock art galleries in Kakadu.

Wake to the call of magpie geese and watch the parade of wildlife emerge from the comfort of your bed. Spot wildlife from six metres high in the treetops from the 'hide', and sit back with a drink and enjoy the soft 'Wild Bush Luxury' touches. The safari lodge and 300 square kilometres of surrounding country are exclusively for in-house guests, assuring a quiet, privileged outback experience.

Bamurru's team of passionate field guides focus on immersing guests in the story of the bush while the lodge provides a haven from which to closely connect with a unique Top End wilderness and with just ten safari suites blending seamlessly into the surrounding bush, you'll forget there is an outside world.



- ✈ Nearest domestic and international airport: Darwin
- 🕒 Time to lodge: 3 hour drive or 30 minute scenic flight by light aircraft or helicopter
- 🔍 Number of safari bungalows: 10
- 👤 Welcomes guests with children 6 years and over

Bamurru Plains

Top End, Northern Territory
Contact: +61 (0)2 9571 6399
or bamurru@wildbushluxury.com
www.luxurylodgesofaustralia.com.au/bamurru

- 📘 WildBushLuxuryExperiences
- 📷 wildbushluxury
- 🐦 WildBushLuxury



BAMURRU PLAINS

Wild Bush Luxury



"An utterly remote, stunningly crafted wilderness lodge, Bamurru is... African-style bush luxury. Built on stilts over the wetlands, Bamurru is state-of-the-art rustic with staff who can morph from Jeeves into Crocodile Dundee."

Tatler



Capella Lodge

Refreshingly off the radar, Capella Lodge is Lord Howe Island's premium luxury retreat. A short flight from Australia's east coast transports visitors to a real 'treasure island', a paradise lost in time and perfectly preserved.

Gently melding modern design into glorious natural surroundings, Capella's underplayed raw-teak-and-white-linen aesthetic lets the true star shine: views of the jaw-droppingly dramatic Mounts Gower and Lidgbird. A feeling of relaxed sophistication flows throughout with beach-chic furnishings, island-themed artworks and kentia palm fringed decks creating an easy ambience and barefoot luxury.

Fine dining is a drawcard and the innovative menu showcases a bounty of local seafood and fresh regional produce. The simple pleasure of a long and lazy barbecue lunch enjoyed alfresco is a favourite Lord Howe tradition with fish feeding on the white gold sands of Neds Beach not to be missed.

The verdant World Heritage site is a paradise of rainforests, reefs and beaches and is home to hundreds of rare and endemic species. Walking tracks scope subtropical forests and remote coves alive with magnificent birdlife. Down below, the world's southern-most coral reef is ablaze with kaleidoscopic colour and a riot of fish, perfect to discover by snorkel or glass bottom-boat.

Inspired by the carefree spirit of the Australian beach house, Capella Lodge brings the ultimate castaway escape to life.



- ✈ Nearest domestic airport: Lord Howe Island
- 🕒 Time to lodge: 5 minute drive
- ✈ Nearest international airport: Sydney
- 🕒 Time to lodge: 2 hour flight + 5 minute drive
- 🔍 Number of suites: 9
- 👤 Welcomes guests with children 10 years and over

Capella Lodge

Lord Howe Island, New South Wales

Contact: +61 (0)2 9918 4355

or reserve@baillielodges.com.au

www.luxurylodgesofaustralia.com.au/capellalodge

- 📘 capellalodge
- 📷 capellalodge
- 🐦 BaillieLodges



"One explanation for the almost Edenic purity of Lord Howe... is that visitors are capped to a maximum of 400 at a time, a lucky 20 of whom get to stay at Capella Lodge, an unexpectedly luxurious yet laid-back hideaway." **Marion Hume, Time Magazine**



Cape Lodge

Sitting on forty acres of manicured gardens, vineyard and native bushland within earshot of the sparkling Indian Ocean, Cape Lodge attracts those seeking a sophisticated retreat with all the trappings of a private country house hotel.

A home away from home guests can while away the day away with a book under the shade of a peppermint tree, by the pool or for those with an energetic inclination there is tennis, croquet and hotel bikes for use to visit neighbouring vineyards, boutique breweries and artisan chocolate makers.

Dining at the restaurant is a highlight of a stay at Cape Lodge. Menus feature local and home grown produce plucked from nearby oceans, local farms and the kitchen garden creating fresh, innovative cuisine.

The Margaret River Region is one of the most naturally beautiful wine regions in the World with over 160km of pristine coastline and beaches, karri forests and limestone caves. World class surfing, swimming, abseiling, mountain biking, golf and coastal hiking are nearby as well as a rich array of art galleries, farms shops and produce stores.

This private country estate has twenty-two secluded rooms and suites, a four bedroom private residence and its own eight acre vineyard producing some of Margaret River's finest handcrafted Sauvignon Blanc and Shiraz exclusively for guests of the lodge.



- ✈ Nearest domestic airport: Busselton
🕒 Time to lodge: 40 minute drive
- ✈ Nearest international airport: Perth
🕒 Time to lodge: 3.5 hour drive
- 🔍 Number of rooms/suites: 22
+ 4 bedroom residence
- 👤 Welcomes guests with
children 12 years and over (see policy)

Cape Lodge

Caves Road, Margaret River,
Western Australia

Contact: +61 (0)8 9755 6311
or stay@capelodge.com.au

[www.luxurylodgesofaustralia.com.au/
capelodge](http://www.luxurylodgesofaustralia.com.au/capelodge)

📘 CapeLodge
📷 cape_lodge
🐦 cape_lodge

Cape Lodge



"Cape Lodge continues to deliver a sophisticated and easy-going charm in the forest, a luxury oasis in the beautiful Margaret River wine region."
Peter Rigby, www.thestarfish.com.au



El Questro Homestead

El Questro Homestead is an outstanding blend of remote regional hospitality and the exploration of the beautiful outback wilderness landscape of the Kimberley region of Western Australia. El Questro is almost 700,000 acres in size and really is one of the world's last true frontiers with rugged sandstone ranges, gorges, waterfalls and abundant wildlife.

El Questro Homestead, a boutique oasis, perched atop a cliff with birds-eye views of The Chamberlain River and Gorge. It is private, understated and exclusive.

The extensive list of experiences is key to The Homestead offering and includes guided 4WD drives, bush, culture and nature tours, bird-watching, gorge hikes, swimming at pristine waterfalls and rock pools, scenic flights, remote picnics and fishing excursions.

After exploring this dramatic land, guests may soak in the thermal Zebedee Springs, curl up under an ancient Boab tree with a book, swim in the pool overlooking the Chamberlain Gorge or simply join the local wallaby population and lounge in the shade. The Homestead is renowned for serving premium cuisine and wine in your choice of setting, from a secluded cliff top table to The Homestead's spacious verandahs.

The Homestead is an easy ninety minute drive from the nearest town of Kununurra, or may be accessed via private airstrip. It offers nine rooms and suites, hosting a maximum of eighteen guests at any time.

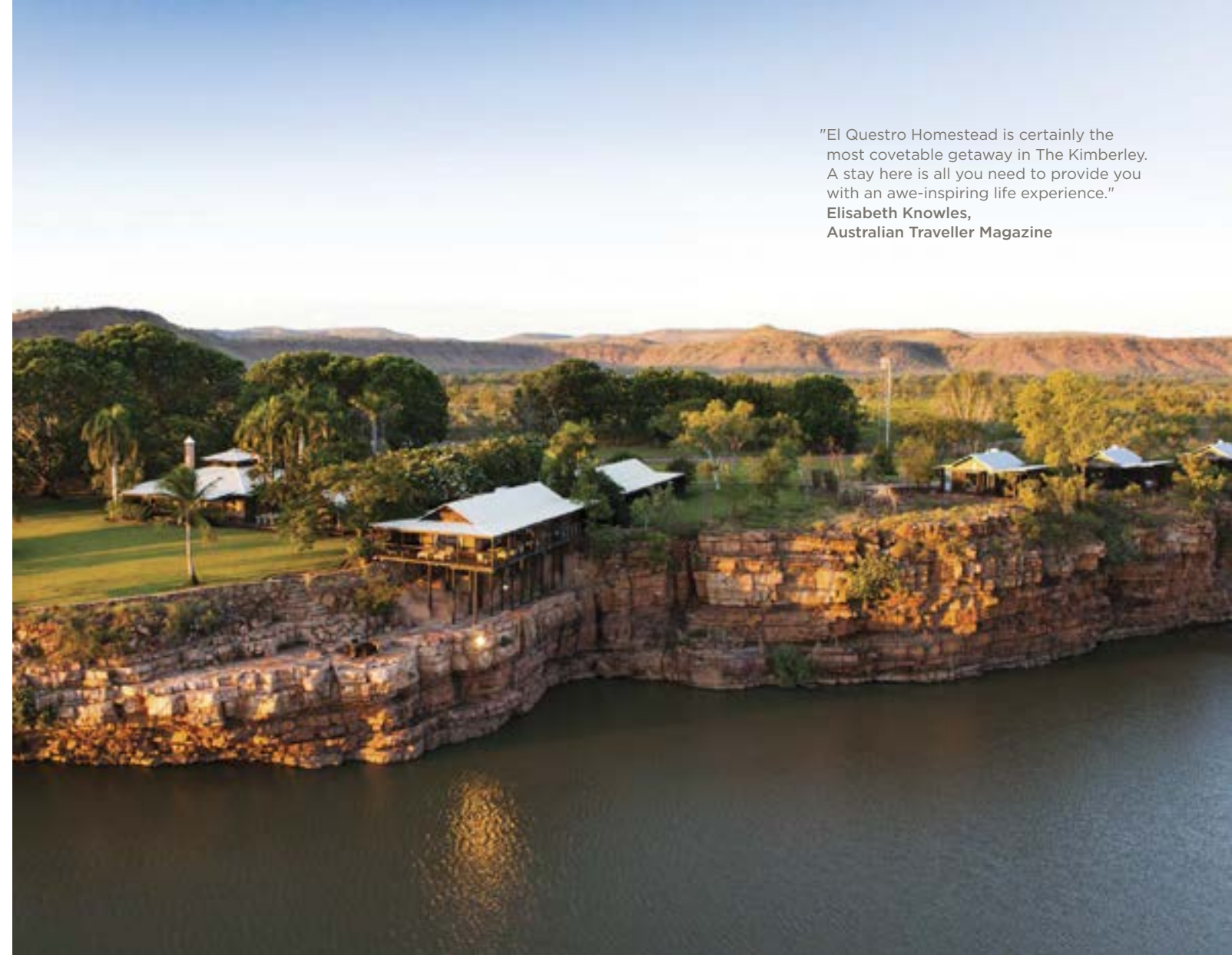


- ✈ Nearest domestic airport: Kununurra
- 🕒 Time to lodge: 30 minute charter flight or 90 minute drive
- ✈ Nearest international airport: Darwin
- 🕒 Time to lodge: 1 hour flight + 90 minute drive or 1.5 hour charter flight
- 🔍 Number of suites: 9
- 👤 Welcomes guests with children 16 years and over

El Questro Homestead

Gibb River Road, East Kimberley,
Western Australia
Contact: Toll free (AUS) 1800 837 168
Landline (US) +1 716 276 0078
or dnappriority@delawarenorth.com
www.luxurylodgesofaustralia.com.au/elquestro

 [elquestro](https://www.facebook.com/elquestro)
 [elquestro](https://www.instagram.com/elquestro)



"El Questro Homestead is certainly the most covetable getaway in The Kimberley. A stay here is all you need to provide you with an awe-inspiring life experience."

Elisabeth Knowles,
Australian Traveller Magazine



Emirates One&Only Wolgan Valley

Emirates One&Only Wolgan Valley is an ultra-luxury retreat, located 2.5 hours northwest of Sydney in the majestic World Heritage-listed Greater Blue Mountains region. Set on 7,000 acres of carbon-neutral conservation and wildlife reserve, the resort blends absolute luxury and seclusion with a quintessentially Australian bush experience.

Nestled between two national parks, the resort offers a unique blend of solitude, native wildlife, dramatic natural beauty, conservation and heritage combined with unsurpassed facilities and outstanding food and wine.

Occupying just one per cent of the total land area, the resort features forty elegantly appointed, free-standing villas, each with its own swimming pool, double-sided fireplace and private verandah with stunning views of the Wolgan Valley and rugged sandstone escarpments. At the centre of the resort sits the Main Homestead with several dining settings, a heritage precinct, and the One&Only Spa – a pampering sanctuary, featuring Australian Sodashi skin care.

The resort's impressive assortment of native wildlife, dramatic landscapes and heritage, can be explored through a range of activities including wildlife safaris, nature walks, heritage tours, mountain biking and horse riding. Guests are also invited to take part in the daily Conservation Activity, working alongside passionate field guides to help preserve this distinctive environment for the future.

Emirates One&Only Wolgan Valley offers the rare opportunity to experience true luxury in the spectacular Australian bush.



- ✈ Nearest domestic airport: Sydney
- 🕒 Time to lodge: 2.5 hour drive
- ✈ Nearest international airport: Sydney
- 🕒 Time to lodge: 2.5 hour drive
- 🔍 Number of villas: 40
- 👤 Welcomes guests with children of all ages

Emirates One&Only Wolgan Valley

2600 Wolgan Road,
Wolgan Valley, New South Wales
Contact: +61 (0)2 9199 1811 or
reservations@oneandonlywolganvalley.com

www.luxurylodgesofaustralia.com.au/wolganvalley

- 📘 EmiratesOneandOnlyWolganValley
- 📷 WolganV
- 🐦 WolganV

Emirates
One&Only
WOLGAN VALLEY
Australia



"What can we say? Beautiful, and brainy, too — the world's first carbonzero resort, which loses nothing to hairshirtery and gains everything in a real and profound engagement with its environment. And did we mention the staff? Going above and beyond the call of duty, they're a great team full of personality and passion for their secret inland island."

**Cate Blanchett and Andrew Upton,
Mr & Mrs Smith review**



14



15

Lake House

Culinary excellence, art, natural beauty and world class service. Welcome to Lake House, Daylesford.

Good food and wine are consuming passions here. A team of talented hospitality professionals with industry legend Culinary Director Alla Wolf-Tasker at the helm, deliver beautiful cutting edge menus and wines from the acclaimed cellar.

Regarded as one of the Best Restaurants in Australia, Lake House has two Chefs Hats and has topped many respected restaurant lists including The Hot 50, Wine List of the Year and Australia's Best Food & Wine Experience.

The hotel's chic studios, suites and Retreat Villas nestle in six acres of lush gardens extending down to Lake Daylesford. Each boasts artwork from acclaimed artist and co-owner Allan Wolf-Tasker's onsite studio.

Guests can join one of the hands on classes or demonstrations in the Cooking School; visit the Salus Day Spa; play tennis; unwind by the infinity pool; explore lake paths meandering past mineral springs into the Wombat State Forest, and enjoy the walkable proximity of the charming village itself. Kookaburras fly in for dinner. Corellas, Cockatoos and Gang Gangs are frequent visitors. Many of Australia's native animals can be encountered along the forest tracks.

As the sun sets over the far shore of the lake, the Argyle Library Bar or the Lagoon Deck are popular places to gather with fellow guests to share tales of the day's adventures.



- ✈ Nearest domestic and international airport: Melbourne
- 🕒 Time to Lodge: 75 minute drive
- 🔍 Number of suites: 33
- 👤 Welcomes guests with children of all ages

Lake House

4 King Street, Daylesford, Victoria
Contact: +61 (0)3 5348 3329
or info@lakehouse.com.au
www.luxurylodgesofaustralia.com.au/lakehouse

- Facebook: LakeHouseDaylesford
- Instagram: lakehousedaylesford
- Twitter: LakehouseDF



"Lake House is so intrinsically entwined with the land, the seasons, the local producers and the local artists, that it never stops evolving."
Luxury Travel Magazine
Australia's Best Food & Wine Experience



Lizard Island

Lizard Island, Australia's northernmost island resort on the Great Barrier Reef, is secluded from the rest of the world, accessible only by a scenic one hour flight over the reef from Cairns.

With only one resort on the island hosting forty rooms and suites – it is the tranquillity and natural beauty of the island that will first greet you.

Twenty-four pristine powdery-white private beaches – literally means you can have a beach to yourself. Snorkelling straight off the beach where clam gardens, coral and marine life are abundant and diving on the inner and outer reef to some of the world's most famous dive sites, including the famous Cod Hole.

The food philosophy is simple and embraces local, fresh produce. Menus change daily at Saltwater Restaurant, guests can also enjoy gourmet picnic lunches on secluded beaches and beachside degustation dining for two at sunset.

Essentia Day spa is luxurious and indulgent, world class fishing locations to explore, personal dinghies for you to discover your own private place and a wide choice of activities to enjoy such as Research Station tours, diving and sunset wine and cheese cruises.

With the bluest of clear blue ocean views from every angle, all of Lizard Island's rooms and suites have been designed to be elegantly understated, allowing the natural beauty in.

Lizard Island – like nowhere else.



- ✈ Nearest domestic and international airport: Cairns
- 🕒 Time to lodge: 1 hour scenic flight over the Great Barrier Reef
- 🔍 Number of rooms/suites: 40
- 👤 Welcomes guests with children 10 years and over

Lizard Island

Great Barrier Reef, Queensland
Contact: Toll free (AUS) 1800 837 204
Landline (US) +1 716 276 0104
or dnapprpriority@delawarenorth.com
www.luxurylodgesofaustralia.com.au/lizardisland

📘 lizardisland
📷 lizardisland

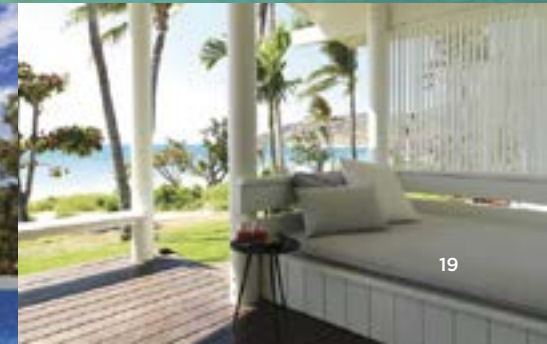
Lizard Island
GREAT BARRIER REEF



"The Reef, one of the world's great wonders, is just outside your doorstep, you can snorkel right off one of the island's 24 private white sand beaches, or take the boat trip to the outer reef to see even more vividly colored coral and larger fish... Lizard has always exemplified luxury in the country. It still does. It's a place you really don't want to leave."
Laurie Werner, forbes.com



18



19

Longitude 131°

Uluru has sat in the middle of Australia for hundreds of millions of years but the show it puts on changes constantly. The best venue to watch the spectacle unfold is from Longitude 131°, a gathering of luxury pavilions nestled among the rust-red landscape.

The desert base fans out from the cool sanctuary of the Dune House, site of lounging, cocktails and rock gazing. Dine overlooking the nation's spiritual heart whilst savouring fine cuisine combining native ingredients and produce sourced from around the country. Retreat to Spa Kinara for an indigenous-inspired treatment or drink in the sunset on the Dune Top with jaw-dropping views to Uluru and Kata Tjuta.

In the spirit of the original pioneers, relax after a day's exploring in a tent recreated for the modern traveller to meld style with sustainability. Unparalleled views of Uluru play out from the end of the bed or from the warmth of a bespoke swag unfurled in the cool night air. Contemporary furnishings, artworks by local indigenous artists and an array of mod cons dispel any illusion of roughing it.

Tempting as it is to hunker down here, venture beyond the lodge for signature excursions exploring the dual World Heritage-listed wilderness and become acquainted with the backstory of the desert icons – not just geology but also their timeless connection to Anangu, the traditional owners.



- ✈ Nearest domestic airport: Ayers Rock
- 🕒 Time to lodge: 15 minute drive
- ✈ Nearest international airport: Sydney
- 🕒 Time to lodge: 3 hour flight + 15 minute drive
- 🔍 Number of suites: 16
- 👤 Welcomes guests with children 10 years and over

Longitude 131°

Ayers Rock (Uluru), Northern Territory
Contact: +61 (0)2 9918 4355
or reserve@baillielodges.com.au
www.luxurylodgesofaustralia.com.au/longitude131

- 📘 [longitude131](#)
- 📷 [longitude131](#)
- 🐦 [BaillieLodges](#)



"When it comes to killer views at the luxury lodge Longitude 131°, nestled in Australia's red heart, it's the premium Dune Pavilion that sets hearts aflutter."
Sue Wallace, Robb Report



Mt Mulligan Lodge

With the backdrop of its majestic 18-kilometre long sandstone namesake, Mt Mulligan Lodge offers laid-back luxury in the rugged outback environment of Queensland.

Located 160km northwest of Cairns, on a 28,000-hectare working cattle station that bears the marks of the historic gold and coal rush, Mt Mulligan Lodge invites guests to experience the spirit of the outback through a captivating landscape that's steeped in indigenous significance.

The lodge accommodates just 16 guests in spacious guest pavilions that complement the landscape and offer a luxurious and charming take on pastoral living. Each pavilion is a sanctuary overlooking a eucalyptus-fringed weir and views of the ever-changing moods of Mount Mulligan.

A range of experiences have been designed to make the most of this outback location and its fascinating history. These include guided tours of the goldfields, including a demonstration of Australia's oldest operating gold crusher, exploration of the historic Mount Mulligan coal mine and abandoned township, all-terrain vehicle (ATV) adventures, chef-prepared picnic hampers, barramundi fishing, scenic helicopter flights, guided nature walks and the chance to experience the operations of a working cattle station.

After a day of adventure, guests can soak in an outdoor bath on their verandah, watch the changing colours of the outback sky from the Sunset Bar, relax with a book in the main pavilion or pool deck, dine on a daily changing menu that puts a flavoursome twist on outback living, or sit by the crackling fire pit as the night sky fills with glittering stars.



- ✈ Nearest domestic and international airport: Cairns
- 🕒 35 minute helicopter flight or 2.5 hour 4WD adventure
- 🔍 Number of suites: 8
- 👤 Welcomes children of all ages

Mt Mulligan Lodge

Mount Mulligan, Queensland

Contact: +61(0)7 4777 7377

or reservations@northernescape.com.au

www.luxurylodgesofaustralia.com.au/mtmulliganlodge

mtmulliganlodge

📘 MountMulliganLodge

📷 mountmulliganlodge



MT. MULLIGAN

LODGE

QUEENSLAND, AUSTRALIA



"At 18km long and rising 400m at her highest point, Ngarrabullgan, or Mount Mulligan, makes for a stunning backdrop to this new outback retreat on a 28,000ha working cattle station, an oasis in the rugged red dirt country. The feel is unpretentious luxury, the style rustic Australian."
Christine Middap,
The Weekend Australian Magazine

Pretty Beach House

Pretty Beach House is the epitome of relaxed luxury; intimate, laid-back, with personalised service offering a quintessential luxe Australian coastal experience in a world class setting.

Perched high on the escarpment at Pretty Beach, this sophisticated lodge sits within an ancient angophora forest with water views over pristine Broken Bay, an idyllic natural wonder.

Pretty Beach House offers guests the opportunity to completely restore or explore – a very private haven and base for adventure, romance, rejuvenation or exploration.

Golden beaches and bays are easily accessible via hiking trails along coastal sandstone cliffs. Other adventure activities include cultural tours with Indigenous folk, boating and sailing, water sports, mountain biking and tennis.

An indigenous welcome smoking ceremony is performed for all guests with song, dance and dreamtime stories told by an elder making for a truly unforgettable experience. This ceremony is performed near aboriginal rock art created by the local Darkinjung tribe dating back almost 10,000 years.

Truly, a rare find, with just four impeccably appointed pavilions, the lodge houses up to eight guests at one time.

Dining is a highlight at Pretty Beach House with seasonal menus prepared by highly talented chefs incorporating bush and native foods along with fresh produce straight from the kitchen garden.

All dining and beverages are included (cellar list additional) along with pavilion mini-bar, unlimited Wi-Fi and mountain bikes.



- ✈ Nearest domestic airport: Sydney or Newcastle
- 🕒 Time to lodge: 90 minute drive from Sydney or Newcastle, 20 minutes by seaplane (From Sydney only) or 20 minutes by helicopter (From Newcastle or Sydney)
- ✈ Nearest international airport: Sydney
- 🕒 Time to lodge: 90 minute drive or 20 minute flight by seaplane or helicopter
- 🔍 Number of suites: 4 pavilions
- 👤 Welcomes guests with children 13 years and over

Pretty Beach House
83 Highview Road, Pretty Beach,
New South Wales
Contact: +61 (0)2 4360 1933
or stay@prettybeachhouse.com
www.luxurylodgesofaustralia.com.au/prettybeachhouse

📘 [prettybeachhouse](#)
📷 [prettybeachhouse](#)

pretty beach house
BOUDDI NATIONAL PARK



"A Love Nest in the Treetops...
The exclusive Pretty Beach House, tucked away in a bush paradise is perfect for romance."
Belinda Kontominas,
Travel Weekender, The Sun Herald



qualia

Located on the secluded northern-most tip of Hamilton Island and surrounded by the unsurpassed beauty of the Great Barrier Reef, qualia is a unique expression of world-class luxury and outstanding modern design. It is a truly special place where everything has been meticulously considered to relax the mind yet completely spoil the senses.

qualia's sun-drenched northern aspect provides the ideal setting to appreciate the passing beauty of each day, with a choice of sixty individual pavilions, many of which feature a private plunge pool where guests can enjoy the breathtaking views across Whitsunday Passage.

Within the resort, qualia offers two exclusive restaurants and the alluring Spa qualia which offers an authentic Australian spa menu, incorporating a comprehensive range of invigorating treatments designed to rebalance the synergy between mind and body.

In addition to easy access to the Whitsunday region's most desirable attractions, guests of qualia can take advantage of priority tee off at Hamilton Island's very own championship golf course. This picturesque course is the only 18-hole golf course in Australia located on its very own Island, and provides challenging play for novice and professional golfers alike.

If time spent together is the ultimate goal, qualia staff can arrange a complimentary beach drop off service – a rare opportunity to indulge in a gourmet picnic for two on an idyllic secluded beach.



- ✈ Nearest domestic airport: Great Barrier Reef Airport, Hamilton Island
🕒 Time to lodge: 5 minute drive
- ✈ Nearest international airport: Brisbane
🕒 Time to lodge: 1 hour 40 minute flight + 5 minute drive
- 📍 Number of suites: 60 private pavilions, some with private pools
- 👤 Welcomes guests with children 16 years and over

qualia
Hamilton Island, Queensland
Contact: +61 (0)2 9433 3349
or reservations@qualia.com.au
www.luxurylodgesofaustralia.com.au/qualia

📘 qualia
📷 qualiaresort
🐦 qualia



"qualia faces the calm, turquoise Coral Sea and it's picturesque from the moment you walk into the open air lobby of the Long Pavilion. It's even better from the plunge pools of the Windward Pavilions, spacious villas constructed of local wood and stone, decorated with the colours of nature and positioned to take in perfect sunsets over the sea".
Laurie Werner, Forbes



Saffire

Saffire Freycinet is Australia's luxury coastal sanctuary on Tasmania's east coast, delivering sophisticated, intimate style and an inspirational experience.

Discreetly positioned overlooking the Hazards Mountains, Freycinet Peninsula and the pristine waters of Great Oyster Bay, Saffire blends mankind and nature with breathtaking beauty.

Featuring twenty luxurious suites, exclusive day spa, restaurant, guest lounge and bar, this new experience is a celebration of the art of service, internal and external wellbeing, local culinary delights, ancient landscapes and abundant wildlife.

In Palate restaurant, Saffire's highly experienced team have ensured innovative dining does not compromise the true flavours of the freshest local produce. Fully inclusive dining from breakfast through to a gourmet degustation or à la carte dinner.

All guests can restore their wellbeing in the premium spa facilities and on-site gym. Soothe the busy mind and refresh the soul with a luxurious treatment in one of Spa Saffire's three retreat rooms overlooking the inspiring landscape and reflective pools.

The Schouten Island Signature Experience has been designed exclusively for guests to deepen their east coast discovery. There's a world of deserted islands, wild bushland and secluded beaches to explore.

The Tasmanian Devil Experience offers guests the rare opportunity to encounter Tasmanian devils in a natural setting, and to participate in the quest to save this endangered species from extinction.



- ✈ Nearest domestic airport: Hobart or Launceston
- 🕒 Time to lodge: 2.5 hours drive from either airport
- ✈ Nearest international airport: Melbourne
- 🕒 Time to lodge: 1 hour flight to Hobart or Launceston + 2.5 hour drive
- 🔍 Number of suites: 20
- 👤 Welcomes guests with children of all ages

Saffire

Freycinet, Tasmania
 Contact: +61 (0)3 6256 7888
 or stay@saffire-freycinet.com.au
www.luxurylodgesofaustralia.com.au/saffire

- 📘 SaffireTasmania
- 📷 saffirefreycinet
- 🐦 SaffireTasmania

Saffire
 FREYCINET



"Very few resorts manage to get all the ingredients right when opening but we can assure you, this beauty of a hotel has ticked all the right boxes. We were literally left speechless — and that takes some doing — as we feasted our eyes on the breathtaking vistas, indulged our senses in our gorgeous suite and in the spa, and devoured the food that made any thought of a diet ridiculous."
Bill Tikos, The Coolhunter online guru



Sal Salis

Where Australia's outback meets the reef... Sal Salis Ningaloo Reef is an eco-luxe tented camp offering comfort and style in the World Heritage listed Cape Range National Park and overlooking the World Heritage listed Ningaloo Reef.

In this pristine and beautiful wilderness region Sal Salis takes great care to protect the fragile eco-system. Accommodation is in fifteen spacious Wilderness Tents and one Honeymoon Tent, all are designed to blend with the dunes. Each has an ensuite bathroom with an eco-friendly loo and hot water shower as well as supremely comfortable beds and views of the Indian Ocean. The social heart of the camp includes lounge, bar and library areas and is raised above the coastal scrub affording views of the reef and the breakers beyond. Chef prepared meals are served communally.

The focus of your stay is the environment and a team of passionate guides are on hand to host guided snorkelling, kayak expeditions and walks in the Ranges. Sal Salis is the perfect base from which to swim with whale sharks (April to July) and with humpback whales (August to October). At night lie out on the beach to stare up at the Milky Way and a canopy of stars stretching across the southern night skies.



- ✈ Nearest domestic airport: Exmouth (Learmonth Airport)
- 🕒 Time to lodge: 1.5 hour drive
- ✈ Nearest international airport: Perth
- 🕒 Time to lodge: 2 hour flight + 1.5 hour drive
- 🔍 Number of suites: 15 Wilderness Tents & 1 Honeymoon Tent
- 👤 Welcomes guests with children 5 years and over

Sal Salis
Ningaloo Reef, Western Australia
Contact: +61 (0)8 9949 1776
or info@salsalis.com.au
www.luxurylodgesofaustralia.com.au/salsalis

📘 Sal Salis Ningaloo Reef
📷 [salsalisningaloo](#)



SAL SALIS
NINGALOO REEF



“...I discovered my hammock strung outside my tent and, more important, I discovered that if I lay in it long enough, I could watch whales blowing and curling out on the ink-blue horizon.”
Max Anderson, The Sunday Times



Silky Oaks Lodge

Neighbouring the World Heritage-listed wilderness of the Daintree National Park, Silky Oaks Lodge offers guests a stylish rainforest escape.

Long regarded as Tropical North Queensland's luxury bolt-hole, Silky Oaks Lodge is ideally located for access to the region's spectacular natural attractions, including the Daintree Rainforest, Mossman Gorge, the Great Barrier Reef and Cape Tribulation. It's also an easy transfer to the stylish restaurant-and-shopping precinct at nearby Port Douglas.

With views over the crystal-clear Mossman River and enveloped by the lush rainforest, guests relax in one of forty private treehouse rooms, each a luxurious retreat complete with generous balcony and hammock ready to sway in the afternoon breeze.

Dining in the open-air Treehouse Restaurant welcomes the sights and sounds of the rainforest, creating an extraordinary backdrop for enjoying fine cuisine in a contemporary Australian style.

Adventures abound for all, with complimentary experiences at Silky Oaks Lodge including yoga and snorkelling in the Mossman River. Optional experiences range from driving safaris, indigenous guided walks, snorkelling and diving the Great Barrier Reef and helicopter tours for those seeking the ultimate exploration of the area.

The renowned Healing Waters Spa offers a range of treatments featuring the natural Australian Sodashi skincare range and is inspired by ancient beliefs that water is a renewing and life-giving force.



- ✈ Nearest domestic and international airport: Cairns
- 🕒 Time to lodge: 60 minute drive
- 📍 Number of treehouses: 40
- 👤 Welcomes guests with children 10 years and over

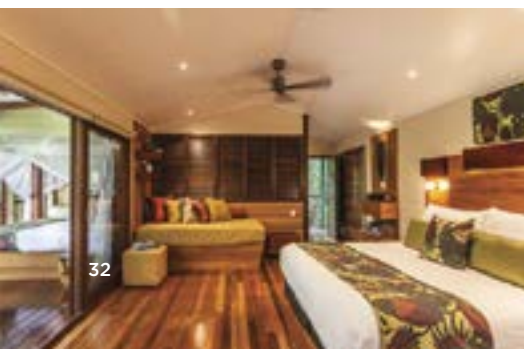
Silky Oaks Lodge

The Daintree, Queensland
Contact: +61 (0)7 4098 1666
or reservations@silkyoaks.com.au
www.luxurylodgesofaustralia.com.au/silkyoakslodge

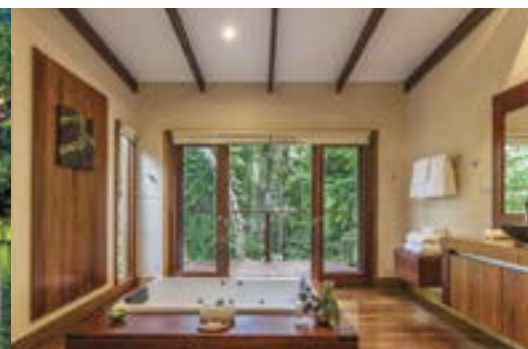
📘 silkyoakslodge
📷 silkyoakslodge



"There is no question of being impervious to the environment here. The lodge borders The Daintree National Park, home to 74 species of mammals, twice as many types of reptiles and amphibians, and 330 kinds of birds... It's a companionable destination of appropriate luxury and lots of creature comforts..."
Susan Kurosawa, Wish Magazine



32



33

Southern Ocean Lodge

Celebrated as a pioneer of Australia's new breed of luxury lodges, this retreat atop the limestone cliffs of Kangaroo Island invites a step into another world. A hop off the coast of Adelaide, 'KI' as the locals call it, is a true wilderness refuge, a place teeming with indigenous species and where a rugged coast offers some of the world's most dramatic ocean views.

Southern Ocean Lodge blends pristine nature, superb fine dining and a personalised itinerary of exhilarating experiences to create a very real sense of place. From guided hikes led by naturalist guides, up-close wildlife encounters and exploration of the 'Wonders of KI' including a grand coastal grotto with resident fur seals, there's an adventure for every whim.

The Great Room serves as the lodge 'hub' with spectacular sweeping vistas playing backdrop for lounging by the suspended fireplace, pouring a drink from the convivial open bar and for indulging in fine food and wine with a proudly local provenance.

Contemporary suites cantilever along the curve of the clifftop each offering spectacular views of the wild Southern Ocean, while myriad thoughtful details from custom furnishings to warm limestone create a feeling of relaxed luxury.

To find a retreat this exceptional in a location this remote only adds to the wonder that is Southern Ocean Lodge.



- ✈ Nearest domestic airport: Kingscote
- 🕒 Time to lodge: 50 minute drive
- ✈ Nearest international airport: Adelaide
- 🕒 Time to lodge: 30 minute flight + 50 minute drive
- 🔍 Number of suites: 21
- 👤 Welcomes guests with children 10 years and over

Southern Ocean Lodge
Hanson Bay, Kangaroo Island,
South Australia
Contact: +61 (0)2 9918 4355
or reserve@baillielodges.com.au
www.luxurylodgesofaustralia.com.au/southernoceanlodge

📘 southernoceanlodge
📷 southernoceanlodge
🐦 BaillieLodges



"At Southern Ocean Lodge the mix of fabulousness and nature finds new frisson... It's bold, it's progressive, it's queen of the wilderness wonderland. Southern Ocean Lodge is really a pair of cool, calm binoculars focused on an astonishing place."
Melinda Stevens, Tatler



Spicers Peak Lodge

Spicers Peak Lodge is Australia’s highest mountain lodge, standing 1,100 metres above sea level, surrounded by breathtaking views of south-east Queensland’s World Heritage listed Main Range National Park, Great Dividing Range and Scenic Rim.

The lodge offers a range of activities designed to give guests an intimate opportunity to experience this strikingly beautiful part of the Australian wilderness including nature walks, 4WD discovery tours, scenic helicopter tours, star gazing, mountain biking adventures, sunset picnics.

Facilities in and around the architecturally designed lodge include an infinity edge swimming pool, hot spa, tennis court, guided walking and mountain bike trails, produce gardens, outdoor campfire, secluded picnic areas, guest lounge with library and fireplace, viewing deck with telescope, on-site day spa with heated plunge pool, bar and restaurant.

The Peak Restaurant offers guests a truly gourmet dining experience, with an emphasis on respect for produce, producer and the environment. These values are blended with impeccable techniques to yield a culinary style that pleases guests and food critics alike.

With ten luxurious suites and two private lodges, Spicers Peak Lodge is a unique blend of relaxing accommodation and fine dining at the height of luxury in one of south-east Queensland High Country’s most beautiful and rugged wilderness areas.



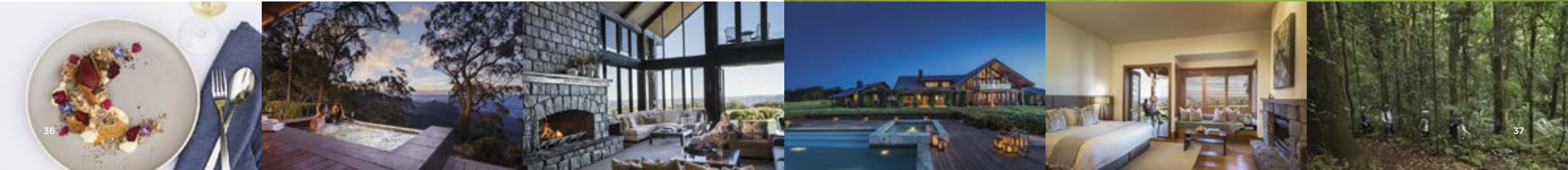
- ✈ Nearest domestic and international airport: Brisbane
- 🕒 Time to lodge: 90 minute drive from Brisbane, 2 hour drive from the Gold Coast
- 🔍 Number of suites: 10 suites, 2 private lodges
- 👤 Welcomes guests with children of all ages (see policy)

Spicers Peak Lodge
Wilkinsons Road, Maryvale,
Scenic Rim, Queensland
Contact: +61 (0)7 4666 1083
or peaklodge@spicersretreats.com
www.luxurylodgesofaustralia.com.au/spicerspeak

- Facebook: [SpicersPeakLodge](#)
- Instagram: [spicerspeaklodge](#)
- Twitter: [peaklodge](#)



“After a relaxing stroll through an ancient hoop pine forest Spicers Peak Lodge, Australia’s highest non-alpine retreat, appears in front of us like a mirage. It is a stunning two-storey hideaway perched above the clouds and we cannot wait to step inside.”
Tiana Templeman, Escape



The Louise

The Louise is located atop a gentle hill and surrounded by hundreds of acres of vines overlooking the world renowned Barossa Valley. Fifteen suites, each with its own private terrace and stunning views over the adjacent vineyards, feature soft contemporary design and artworks.

Integral to a stay at The Louise is dining at Appellation, one of Australia's finest regional restaurants. Appellation's culinary team are guided by the rhythms of the seasons; harvesting from their kitchen garden; baking their own breads; butchering and curing their own meats; and celebrate wine and food as the most natural of partners. They are passionate advocates for freshness, seasonality and regionalism. An extensive award-winning wine list showcases the best of the Barossa, Australia and the world.

Guests may float over ancient vineyards in a hot air balloon, enjoy a sunrise picnic breakfast with kangaroos in native bushland, tour the picturesque valley in a vintage car, walk or cycle bush tracks, make their own blend of wine and have Appellation prepare a dinner to match, or join Appellation's chef while he peruses the local farmer's market for provisions. Guests will discover amazing wines, meet warm local characters and fall in love some of the world's most engaging wine country.

Together, Appellation and The Louise is the food, wine and luxury accommodation destination for discerning travellers.



- ✈ Nearest domestic and international airport: Adelaide
- 📍 Time to lodge: 75 minute drive
- 🔍 Number of suites: 15
- 👤 Welcomes guests with children 10 years and over

The Louise Barossa Valley

375 Seppeltsfield Road, Marananga, South Australia

Contact: +61 (0)8 8562 2722

or stay@thelouise.com.au

www.luxurylodgesofaustralia.com.au/thelouise

📘 [thelouisebarossavalley](#)

📘 [appellationbarossavalley](#)

📷 [thelouisebarossa](#)

📷 [appellationrestaurant](#)



"Born of an holistic approach and intimate connection to the land, Appellation (at The Louise) brings food and wine together with a powerful guarantee of regional authenticity."
Louise Radman, Australian Gourmet Traveller



True North

An adventure on the True North has long been regarded as one of Australia's most revered tourism experiences. All itineraries are activity based and designed for discerning travellers who truly want to 'experience' some of Australia's most remote coastal destinations.

Extended periods at sea are specifically excluded and daily activities can include walks, fishing, snorkelling, diving, picnics, natural history, cultural events and more. The True North is an Australian registered ship and not required to leave Australian waters during Australian voyages – every day on-board the True North is an activity day.

Destinations include the Kimberley, a panorama of rugged mountains, spectacular gorges and majestic waterfalls; the still-wild coast of Western Australia featuring the intriguing Abrolhos Islands, world-famous Ningaloo Reef, the Montebello Islands and the pristine Rowley Shoals; beautiful Sydney and surrounds and, a seafood safari around the Eyre Peninsula.

The True North has been designed to go where other ships cannot. Multiple adventure boats explore even further and guests experience wilderness 'up close'. Most cruise options feature an on-board helicopter which adds another dimension to the adventure.

Guest numbers are limited to thirty-six and an Australian crew of twenty two chaperones every experience. Spacious cabins feature modern décor with ensuites.

Find out why guests disembarking from the True North consistently respond with "that's the best holiday I have ever had!".



- ✈ Nearest domestic airport: For Kimberley departures – Broome or Kununurra (depending on direction of travel)
- 🕒 Time to lodge: Broome – 10 minutes. Kununurra – 1 hour. (Transfers provided)
- ✈ Nearest international airport: Perth and Darwin
- 🕒 Time to lodge: 2 hour flight + road transfer
- 🔍 Number of cabins: 18
- 👤 Welcomes guests with children of all ages (see policy)

True North Adventure Cruises

Contact: +61 (0)8 9192 1829

or cruise@truenorth.com.au

www.luxurylodgesofaustralia.com.au/truenorth

📘 [truenorthadventurecruises](#)

📷 [truenorthadventurecruises](#)

🐦 [MVTrueNorth](#)

TRUE NORTH

The Art of Adventure

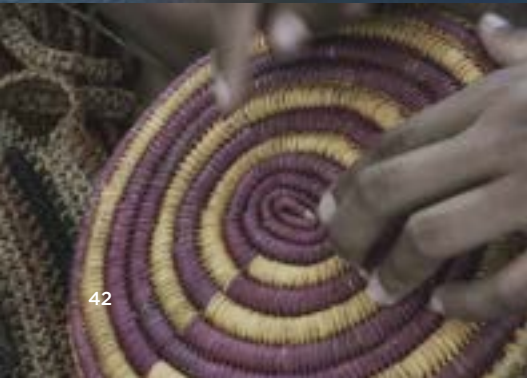


"Cruising along the Kimberley coast on the True North is the trip of a lifetime."
Jerry Hall, Actress and Model



Some of Australia's best...

To assist with creating truly immersive, uniquely Australian itineraries, there are a number of other 'collective' organisations we recommend. Each of these delivers some of the best experiences in their field and are a great complement to a luxury lodge trip.



Australian Wildlife Journeys features Australia's independently owned and operated wildlife tour operators offering unparalleled connection to Australia's most spectacular natural environments. Iconic and immersive wildlife encounters include birdwatching, whale watching, marsupial spotting and snorkelling.



Cultural Attractions of Australia is a collective of iconic Australian arts and cultural attractions that have joined forces to present Australia's best cultural offering to the world. Each attraction has developed premium experiences to ensure unrivalled access and attention for guests, who can expect the unexpected.



Discover Aboriginal Experiences is a collective of inspiring and transformational experiences guided by Aboriginal people who share their country and bring the landscape to life through their stories. A diverse range of experiences on offer include quad biking, kayaking, hiking, fishing, mud crabbing, sightseeing, art and food.



Great Fishing Adventures of Australia provides saltwater, freshwater and fly fishing enthusiasts the opportunity to indulge in their passion in some of the most diverse environments the world has to offer.



Great Golf Courses of Australia provides access to some of Australia's leading golf courses, including the country's six World Top 100 course listings: Barnbougles Dunes and Barnbougles Lost Farm, Kingston Heath, New South Wales, Royal Melbourne and Royal Adelaide.



Great Walks of Australia offers superb and quintessentially Australian walking experiences that engage walkers in some of the world's most spectacular terrain. These walks inspire travellers to explore Australia's diverse landscape by foot, where guests reconnect with nature in small, intimate groups led by expert guides with a deep understanding and appreciation of the environment.



Ultimate Winery Experiences Australia is a collection of premium award-winning wineries in Australia's most renowned wine regions. These wineries are not just places to sample and purchase wine, but offer a diverse and unique range of cellar door, dining and private touring experiences.



Plan your journey

Australia is a welcoming and accessible place. It is also a vast land with enormous diversity of inspiring travel destinations, so planning the logistics of a trip can be daunting.

The Luxury Lodges of Australia website has some great tools for planning trips to the furthest reaches and most special places on the continent. Trip ideas may be viewed by destination, experience or by property. There are also seamless itinerary suggestions. The aim is to minimise time in transit, and maximise time experiencing our incredible destinations.

Brief information with great tips about getting to or between any of Australia's luxury lodges is an invaluable guide when planning a trip. Many of the lodges have helipads and close access to landing strips for even greater accessibility by private jet or charter.

Whether you book direct with your chosen destinations, or via your preferred travel specialist, luxurylodgesofaustralia.com.au is a great place to start.



- | | |
|-----------------------------------|-------------------------|
| 1 Arkaba | 10 Mt Mulligan Lodge |
| 2 Bamurru Plains | 11 Pretty Beach House |
| 3 Capella Lodge | 12 qualia |
| 4 Cape Lodge | 13 Saffire |
| 5 El Questro Homestead | 14 Sal Salis |
| 6 Emirates One&Only Wolgan Valley | 15 Silky Oaks Lodge |
| 7 Lake House | 16 Southern Ocean Lodge |
| 8 Lizard Island | 17 Spicers Peak Lodge |
| 9 Longitude 131° | 18 The Louise |
| | 19 True North |

A COLLECTION OF INDEPENDENT LUXURY LODGES AND CAMPS
OFFERING UNFORGETTABLE EXPERIENCES IN AUSTRALIA'S
MOST INSPIRING AND EXTRAORDINARY LOCATIONS



LUXURY
LODGES
OF AUSTRALIA

luxurylodgesofaustralia.com.au

 [LuxuryLodgesOfAustralia](https://www.facebook.com/LuxuryLodgesOfAustralia)

 [luxurylodgesofaustralia](https://www.instagram.com/luxurylodgesofaustralia)

 [luxelodgesofoz](https://www.pinterest.com/luxelodgesofoz)

 [luxelodgesofoz](https://twitter.com/luxelodgesofoz)

[#luxurylodgesofaustralia](https://twitter.com/luxurylodgesofaustralia)

